

Columbus, NE | Platte County

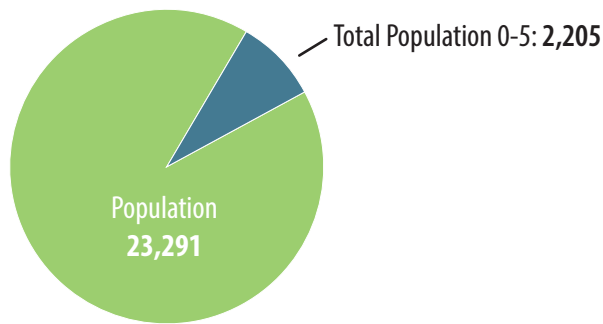
Community Conversation About Early Childhood Programs and Services



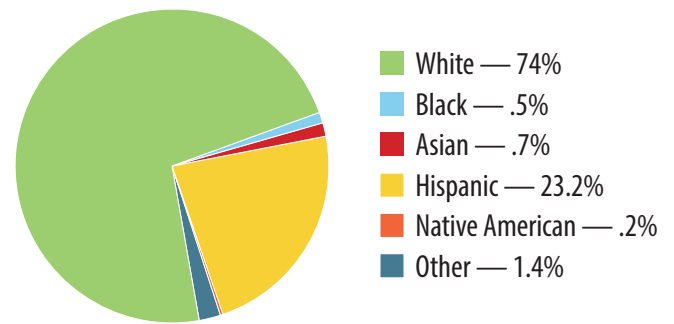
The Communities for Kids initiative was created in response to community requests for assistance with shortages of high-quality early care and education programs — shortages that both impact children’s optimal development and pose a challenge for communities hoping to attract and retain the viable workforces they need to thrive.

Communities for Kids partners with communities’ public and private entities to support and coordinate planning for access to high-quality early care and education for all children birth through age eight. These partnerships are customized to address each community’s unique assets and needs — so each community can grow and prosper well into the future.

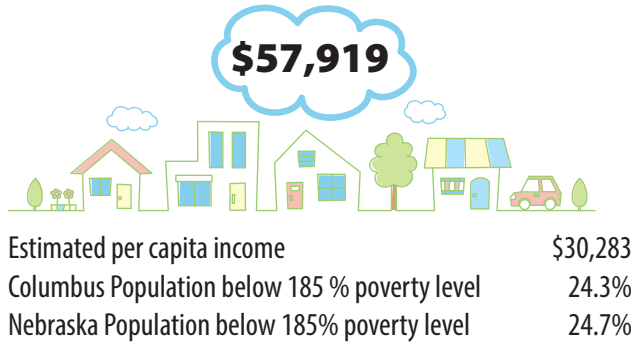
Columbus, NE, Demographics



Other Demographics



Median Household Income



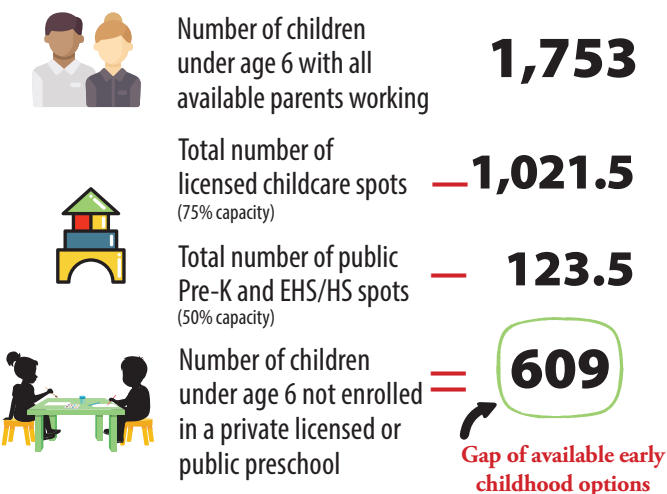
Public Early Childhood Programs

Public Pre-Kindergarten programs	5
Head Start or Early Head Start	4
Sixpence - Center-based	0
Total Public Center-based Spots <small>(Part-time 50% capacity)</small>	123.5

Public Early Childhood Programs

Licensed In-home Childcare Providers	37
Licensed Center-based Childcare Providers	12
Licensed Preschool Providers	3
Total Full-Time Capacity 0-5 <small>(Part-time 75% capacity)</small>	1,021.5

Childcare and Preschool Availability



Comparison Rates and Outcomes

	COLUMBUS	ALL NEBRASKA
Free/Reduced Lunch	48%	46%
High School Graduation Rate	84%	88%
English Learners	14%	7%

Community Assessment Group information: *Who participated?*

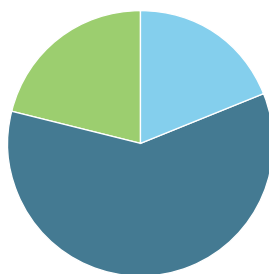
The survey was open for participation through these two methods:

- Flyers with a web link encouraging parents to access it online. These were distributed through the local school systems' elementary and early childhood programs and childcare providers and an e-newsletter for United Way's Imagination Library program.
- Hard copies given directly to childcare providers at a conference and parents of children in the Head Start and Early Head Start programs.

Total Returned Surveys	524
English	441
Spanish	83

Children and Families

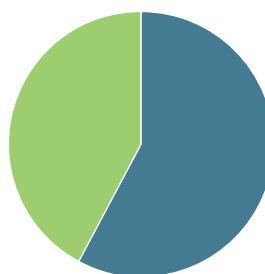
Do you feel that there are enough child care options in your community?



Yes - 19%
No - 60%
I don't know - 21%

Answered: 465 Skipped: 59

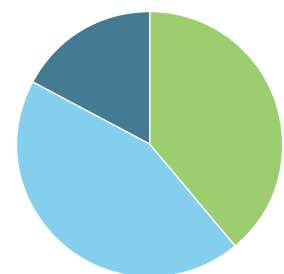
Do you currently use a childcare provider?



Yes - 58%
No - 42%

Answered: 283 Skipped: 241

In the last 12 months, has a lack of childcare caused you to miss work, be tardy, or cause a distraction at work?

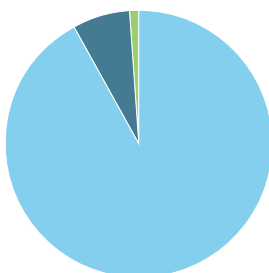


Yes - 39%
No - 44%
N/A - 44%

Answered: 283 Skipped: 241

Community

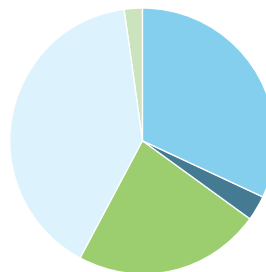
How important is high-quality childcare/preschool in your community?



Important - 92%
Sort of important - 7%
Not important - 1%

Answered: 465 Skipped: 59

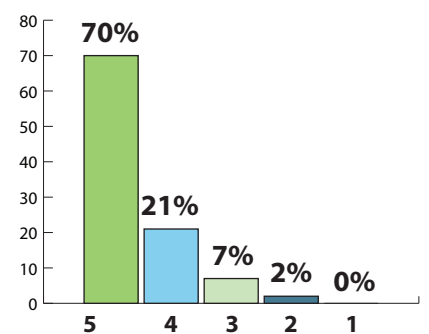
Do you feel the childcare/preschool that is offered in your community is high-quality?



Yes - 32%
No - 3%
I don't know - 23%
Some - 40%
N/A - 2%

Answered: 466 Skipped: 58

On a scale of one to five, five being the most important, what priority would you give to high-quality childcare availability for the future growth & development of Platte County?



Answered: 459 Skipped: 25

The Columbus community is focused on the following three priorities through their C4K work.

Through the support and combined efforts, the Columbus Community for Kids team is working to address the following priorities. We encourage community members to reach out to the team to provide your knowledge, skills, and experience in supporting these priorities.

1. Provider support
2. Facility exploration through the public school with community provider on-site
3. Community meetings on facility building and housing community resources