

Schuyler, NE | Colfax County

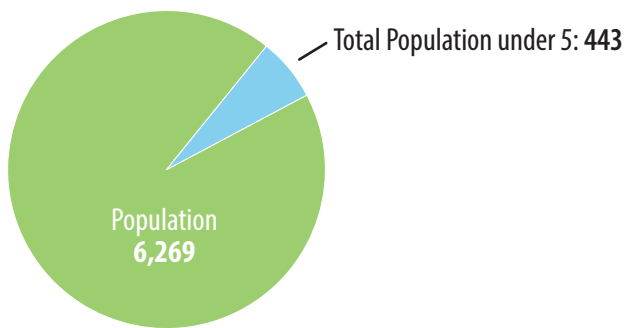
Community Conversation About Early Childhood Programs and Services



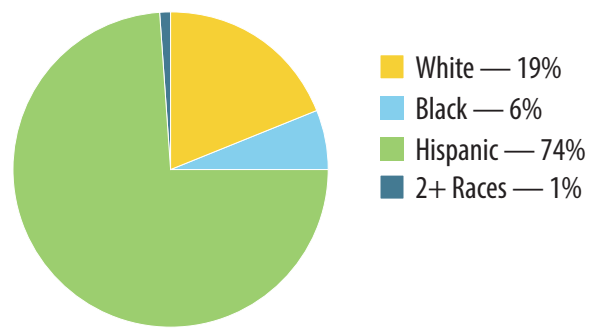
The Communities for Kids initiative was created in response to community requests for assistance with shortages of high-quality early care and education programs — shortages that both impact children’s optimal development and pose a challenge for communities hoping to attract and retain the viable workforces they need to thrive.

Communities for Kids partners with communities’ public and private entities to support and coordinate planning for access to high-quality early care and education for all children birth through age eight. These partnerships are customized to address each community’s unique assets and needs — so each community can grow and prosper well into the future.

Schuyler, NE, Demographics



Other Demographics



Median Household Income



Estimated per capita income \$20,225
Schuyler Population below 185% poverty level 37%
Nebraska Population below 185% poverty level 24%

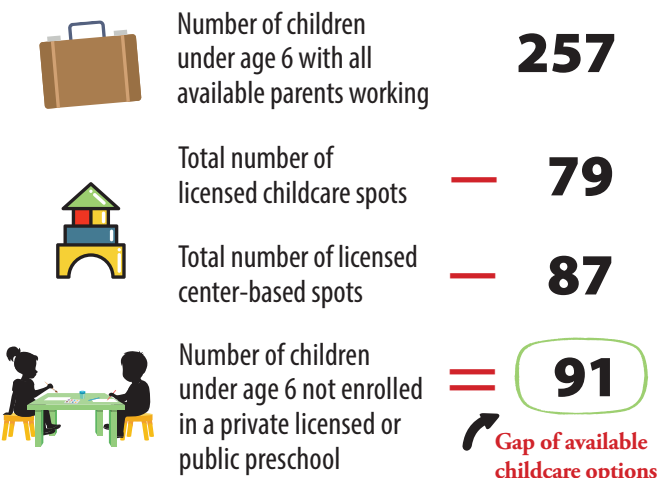
Public Early Childhood Programs

| | |
|---|-----------|
| Public Pre-Kindergarten programs | 53 |
| Head Start or Early Head Start | 34 |
| Sixpence - Center-based | 0 |
| Total Public Center-Based Spots (Minus 50% half-day or non-full-time) | 87 |

Public Early Childhood Programs

| | |
|--|-----------|
| Licensed In-home Childcare Providers | 5 |
| Licensed Center-based Childcare Providers | 1 |
| Licensed Preschool Providers | 0 |
| Total Capacity Licensed Spots (75% of total capacity) | 79 |

Quality Childcare Availability



Comparison Rates and Outcomes

| | SCHUYLER PUBLIC SCHOOL | ALL NEBRASKA |
|-----------------------------|------------------------|--------------|
| Mobility | 5.92% | 3.95% |
| Free/Reduced Lunch | 58% | 46% |
| High School Graduation Rate | 86% | 88% |
| English Learners | 40% | 7% |